

Frank Phillips College

Increase in Distance Learning Education Methods¹

FALL 2003	Head Count	Contact Hours
Total Academic	1008	180665
Academic (Borger)	674	149464
Academic (Perryton)	35	3152
Concurrent	299	28049
Number of students dependent on DL technology*	334	31201
Percentage of students dependent on DL technology	33%	17%

*Academic (Perryton) + Concurrent. This represents a minimum number. It does not include those students attending the Borger campus that sit in broadcast classes or those utilizing internet, DVD, or VCT courses.

FALL 2004	Head Count	Contact Hours
Total Academic	1169	213968
Academic (Borger)	679	167008
Academic (Perryton)	49	6688
Concurrent	441	40272
Number of students dependent on DL technology*	490	46960
Percentage of students dependent on DL technology	42%	22%

*Academic (Perryton) + Concurrent. This represents a minimum number. It does not include those students attending the Borger campus that sit in broadcast classes or those utilizing internet, DVD, or VCT courses.

FALL 2005	Head Count	Contact Hours
Total Academic	1162	202624
Academic (Borger)	616	148448
Academic (Perryton)	96	14048
Concurrent	450	40128
Number of students dependent on DL technology*	546	54176
Percentage of students dependent on DL technology	47%	27%

*Academic (Perryton) + Concurrent. This represents a minimum number. It does not include those students attending the Borger campus that sit in broadcast classes or those utilizing internet, DVD, or VCT courses.

FALL 2006	Head Count	Contact Hours
Total Academic	1161	201310
Academic (Borger)	633	148080
Academic (Perryton)	108	14688
Concurrent	420	38542
Number of students dependent on DL technology*	528	53230
Percentage of students dependent on DL technology	45%	26%

*Academic (Perryton) + Concurrent. This represents a minimum number. It does not include those students attending the Borger campus that sit in broadcast classes or those utilizing internet, DVD, or VCT courses.

FALL 2007	Head Count	Contact Hours
Total Academic	1159	197952
Academic (Borger)	598	139851
Academic (Perryton)	102	14549
Concurrent	459	43552
Number of students dependent on DL technology*	561	58101
Percentage of students dependent on DL technology	48%	29%

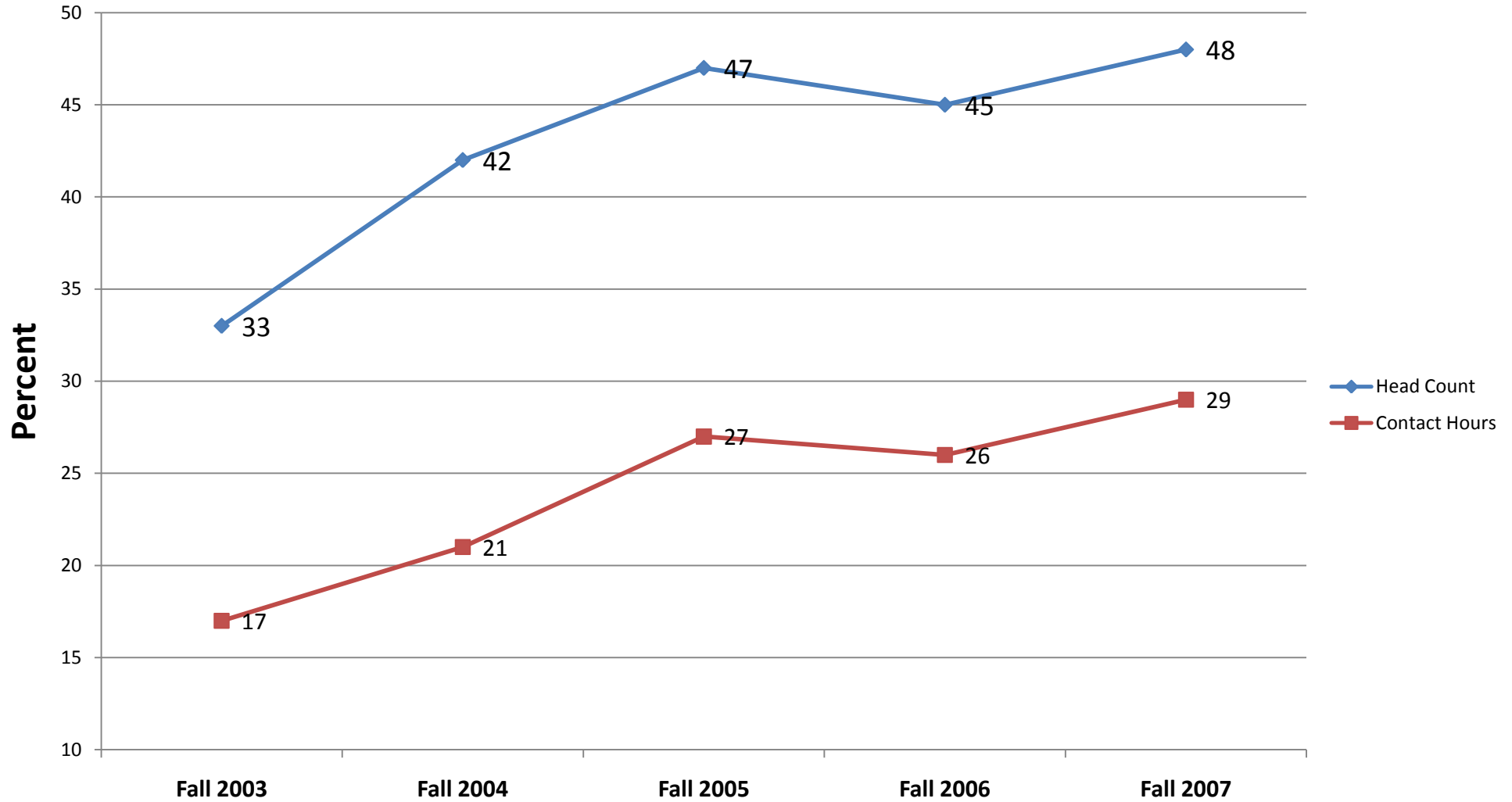
*Academic (Perryton) + Concurrent. This represents a minimum number. It does not include those students attending the Borger campus that sit in broadcast classes or those utilizing internet, DVD, or VCT courses.

¹Based on 5-yr trend information provided by Michelle Stevens. Does not include Workforce numbers, only academic transferable class enrollment numbers.

Frank Phillips College

Increase in Distance Learning Education Methods¹

Percentage of Students (Academic - Perryton and Concurrent only) Directly Using FPC Distance Learning Technology (Broadcast classes, internet, DVD, etc.)



¹Based on 5-yr trend information provided by Michelle Stevens. Does not include Workforce numbers, only academic transferable class enrollment numbers.

Frank Phillips College

Increase in Distance Learning Education Methods¹

SPRING 2004	Head Count	Contact Hours
Total Academic	902	156192
Academic (Borger)	571	126472
Academic (Perryton)	17	1616
Concurrent	314	28104
Number of students dependent on DL technology*	331	29720
Percentage of students dependent on DL technology	37%	19%

*Academic (Perryton) + Concurrent. This represents a minimum number. It does not include those students attending the Borger campus that sit in broadcast classes or those utilizing internet, DVD, or VCT courses.

SPRING 2005	Head Count	Contact Hours
Total Academic	1162	185744
Academic (Borger)	669	136144
Academic (Perryton)	58	8176
Concurrent	435	41424
Number of students dependent on DL technology*	493	49600
Percentage of students dependent on DL technology	42%	27%

*Academic (Perryton) + Concurrent. This represents a minimum number. It does not include those students attending the Borger campus that sit in broadcast classes or those utilizing internet, DVD, or VCT courses.

SPRING 2006	Head Count	Contact Hours
Total Academic	1055	179936
Academic (Borger)	529	126544
Academic (Perryton)	94	14608
Concurrent	432	38784
Number of students dependent on DL technology*	526	53392
Percentage of students dependent on DL technology	50%	30%

*Academic (Perryton) + Concurrent. This represents a minimum number. It does not include those students attending the Borger campus that sit in broadcast classes or those utilizing internet, DVD, or VCT courses.

SPRING 2007	Head Count	Contact Hours
Total Academic	1085	176160
Academic (Borger)	545	121392
Academic (Perryton)	95	14304
Concurrent	445	40464
Number of students dependent on DL technology*	540	54768
Percentage of students dependent on DL technology	50%	31%

*Academic (Perryton) + Concurrent. This represents a minimum number. It does not include those students attending the Borger campus that sit in broadcast classes or those utilizing internet, DVD, or VCT courses.

SPRING 2008	Head Count	Contact Hours
Total Academic	1015	167376
Academic (Borger)	469	109024
Academic (Perryton)	89	13360
Concurrent	457	44992
Number of students dependent on DL technology*	546	58352
Percentage of students dependent on DL technology	54%	35%

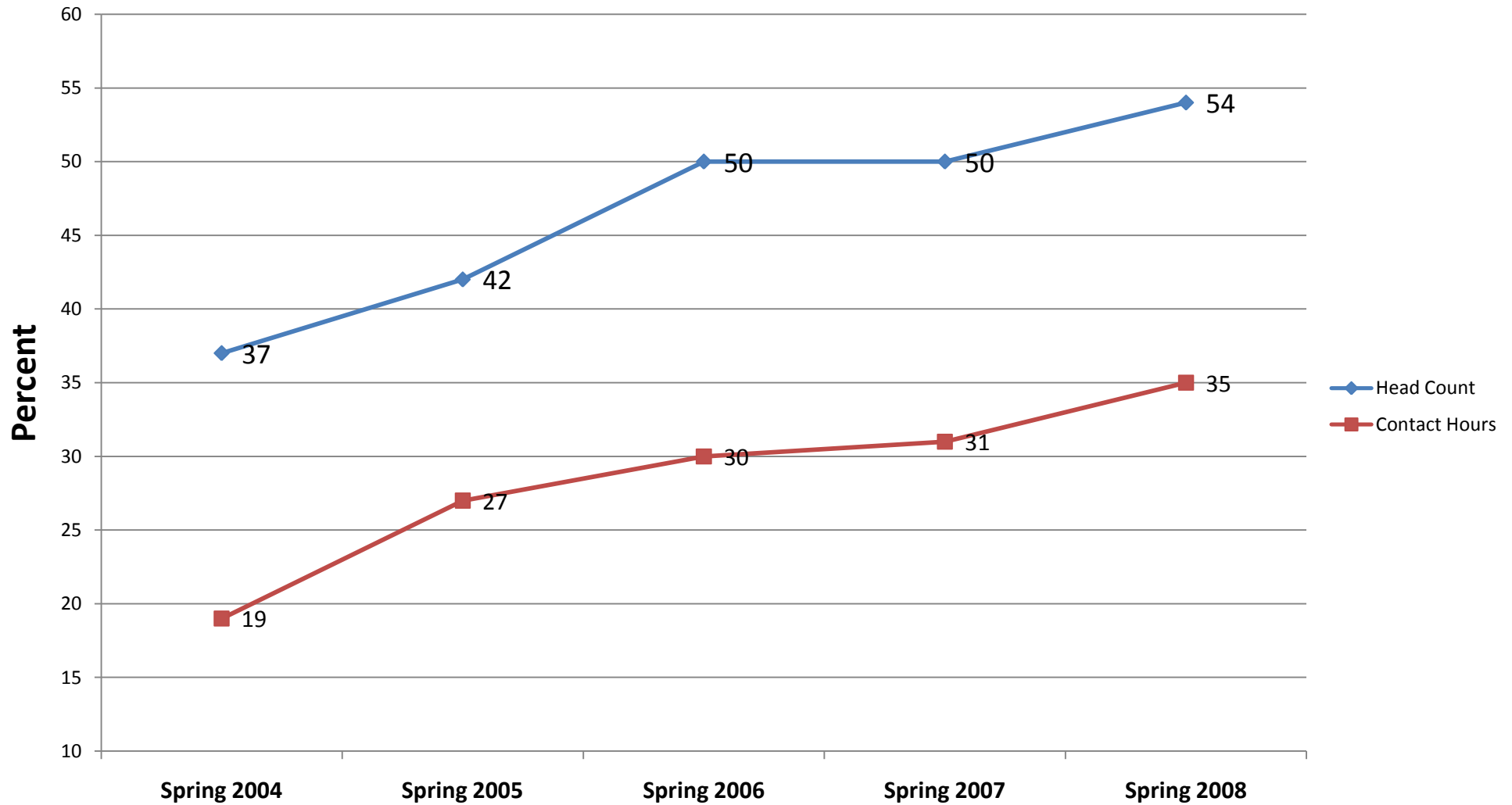
*Academic (Perryton) + Concurrent. This represents a minimum number. It does not include those students attending the Borger campus that sit in broadcast classes or those utilizing internet, DVD, or VCT courses.

¹Based on 5-yr trend information provided by Michelle Stevens. Does not include Workforce numbers, only academic transferable class enrollment numbers.

Frank Phillips College

Increase in Distance Learning Education Methods¹

Percentage of Students (Academic - Perryton and Concurrent only) Directly Using FPC Distance Learning Technology (Broadcast classes, internet, DVD, etc.)



¹Based on 5-yr trend information provided by Michelle Stevens. Does not include Workforce numbers, only academic transferable class enrollment numbers.